


Human/Mouse/Rat GDF11 Protein, His tag

Cat #: PRP1943

Size: 5 µg/20 µg/100 µg /1 mg

Product Information

| | | | |
|---|---|------------|---|
| | Product Name: Human/Murine/Rat GDF-11 Protein, His tag | | |
| REF | Catalog Number: PRP1943 | LOT | Lot Number: Refer to product label |
| | Purity: > 95 % as determined by SDS-PAGE | | |
|  | Storage: Store at -20°C | | Preparation method: E.coli |
| | Shipping: The product is shipped at ambient temperature. | | |

Background: Vascular GDF-11 is a myostatin-homologous protein that acts as an inhibitor of nerve tissue growth. GDF-11 has been shown to suppress neurogenesis through a myostatin-like pathway, which involves the arrest of the progenitor cell cycle in the G1 phase. Similarities between myostatin and GDF-11, which are 90% identical in their amino acid sequence, suggest that the regulatory mechanisms responsible for maintaining proper tissue size during neural and muscular development might be the same. Recombinant Human/Murine/Rat GDF-11 is highly homologous to myostatin/GDF-8, sharing 90% amino acid sequence identity.

Sequence: Amino acid sequence derived from Human/Murine/Rat GDF-11 (Asn299-Ser407) (O95390) was expressed with 6 × His Tag.

Protein length: The recombinant Human/Murine/Rat GDF-11 Protein consists of 109 amino acids and predicts a molecular mass of 12.6 kDa.

Biological Activity: Testing in Progress.

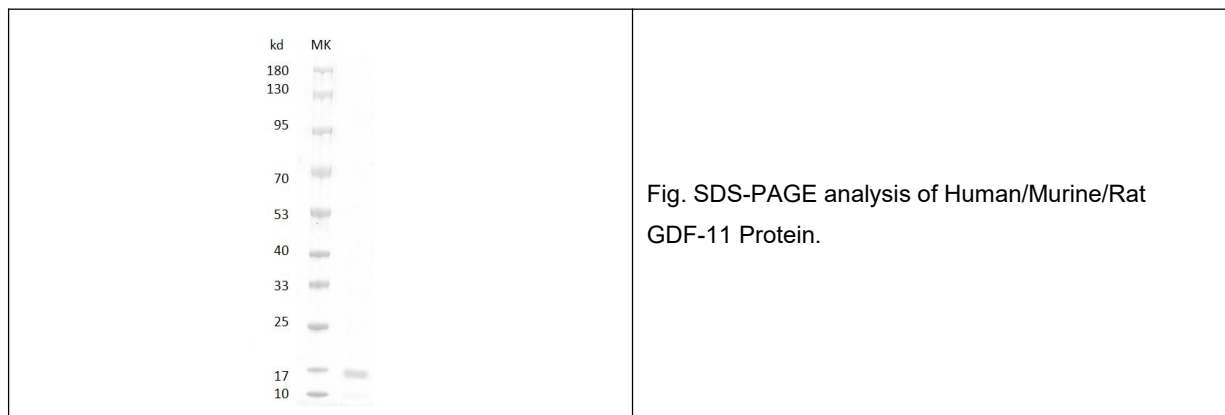
Endotoxin: <0.1 EU per µg of the protein by the LAL method.

Formulation: Lyophilized from 20 mM Tris-HCl, 50 mM NaCl, pH 9.0.

Storage Instructions: Lyophilized protein product should be stored desiccated below -20°C. Upon reconstitution, the protein should be stored at 4°C between 2-7 days and for future use below -20°C. For long term storage it is recommended to add a carrier protein (0.1% HSA or BSA). Please prevent freeze-thaw cycles.

Usage notes: Always centrifuge tubes before opening. It is recommended to reconstitute the lyophilized protein using the

buffer we provided not less than 100 µg/ml, which can then be further diluted to other aqueous solutions.



Note: The product listed herein is for research use only and is not intended for use in human or clinical diagnosis. Suggested applications of our products are not recommendations to use our products in violation of any patent or as a license. We cannot be responsible for patent infringements or other violations that may occur with the use of this product.